

Based on the Woolley/Karsen/Number 9 Motion Picture. This amateur production is presented by arrangement with Music Theatre International. All authorised performance materials are also supplied by MTI. [www.mtishows.co.uk](http://www.mtishows.co.uk)

# made in Dagenham



THE MUSICAL



Music  
by  
DAVID  
ARNOLD

Lyrics  
by  
RICHARD  
THOMAS

Book  
by  
RICHARD  
BEAN

*noda*  
Be inspired by amateur theatre



# made in Dagenham

THE MUSICAL

## Welcome!

.... To you, our audience. We really hope that you enjoy our production of this heart warming, uplifting show. It's a poignant and empowering story, based on actual events, that not only celebrates the fortitude and solidarity of working class women, but also highlights the broader societal injustices and political shifts that were taking place during the 1960s - a time of great change.

This story is very dear to my heart as I was part of a family that was affected by the strike. Ford opened their plant in 1929 and employed 30,000 workers - my father being one of them. In 1968 the women machinists were downgraded to 'unskilled', and this led to the strike and the whole plant grinding to a standstill. Our Prime Minister, Harold Wilson, and the Minister of Trade Unions, Barbara Castle were involved in negotiations towards a settlement.

Working class people at that time were mostly one income families and rarely had savings to fall back on so, when the men were all laid off, tough times ensued. Rent went unpaid and some women didn't have enough money to feed the gas and electricity meters, let alone their children.

I was luckier than most as my mother had a part time job, and I recall her cooking huge pots of stew and dumplings to help feed less fortunate families - no Food Banks in those days. There was a supportive camaraderie among the women and I remember our kitchen as a busy, cheerful place as women and children gathered to share and support each other.

The 187 women who went on strike eventually settled for 92% of male pay, but a further strike in 1984 got their skill and pay grade recognised as equal to the men.



Rita O'Grady is a fictional representation of these amazingly courageous women who took on the male biased unions, and the might of the Ford Motor Company, to fight for their rights; often putting their own marriages and families under threat. A perfect example of ordinary people doing extraordinary things by standing together. As a society we've come a long way but women's struggle for gender equality goes on and recent figures show a 17% pay gap. This show has a resonance today as hardship is a reality for lots of families, and many women struggle to juggle work and family lives.



I would like to thank our Creative Team for bringing their vision of the show to life, our talented cast for their limitless enthusiasm and hard work, the Penguin Club for our crew who have brought it to the stage, and all the unsung heroes working behind the scenes. There would be no show without you all!

Special thanks go to Nuffield Health for providing rehearsal space, and to their staff for making us feel so welcome.

I look forward to greeting you at our Spring 2025 production of 'Pippin'!

*Madeline*

Madeline Harmer, Chair of the Pied Pipers



# Scenes and Songs

## Act 1

Scene 1	<b>Rita and Eddie's House</b> BUSY WOMAN ( <i>Rita, Sharon, Graham, Eddie, Women</i> )
Scene 2	<b>The Ford Dagenham River Plant</b> MADE IN DAGENHAM ( <i>Factory Workers</i> ) THIS IS WHAT WE WANT ( <i>Sandra, Beryl, Rita, Cass, Claire, Factory Workers</i> )
Scene 3	<b>Union Convenors' Office at Ford</b> UNION SONG ( <i>Men</i> )
Scene 4	<b>Ford Factory Floor</b> WOSSNAME ( <i>Clare, Women</i> )
Scene 5	<b>Big Ben</b> ALWAYS A PROBLEM ( <i>Harold Wilson, Aides</i> ) BUSY WOMAN ( <i>Barbara Castle</i> )
Scene 6	<b>Ford Social Club</b> PAY DAY ( <i>Ensemble</i> ) MOON OVER DAGENHAM ( <i>Club Singer</i> ) I'M SORRY I LOVE YOU ( <i>Eddie, Rita, Men</i> )
Scene 7	<b>The Hopkins House</b>
Scene 8	<b>The School</b> SCHOOL SONG ( <i>Graham, Ensemble Men</i> )
Scene 9	<b>Harold Wilson's Office</b>
Scene 10	<b>The Berni Inn</b> SAME OLD STORY ( <i>Connie, Women</i> )
Scene 11	<b>Ford Management Offices</b>
Scene 12	<b>Ford Factory Floor</b> EVERYBODY OUT ( <i>Rita, Ensemble</i> )

## Act 2

Scene 1	<b>Ford Management Offices</b> THIS IS AMERICA ( <i>Tooley, Ensemble</i> )
Scene 2	<b>Rita and Eddie's House</b>
Scene 3	<b>Outside the Factory</b> STORM CLOUDS ( <i>Principals and Ensemble</i> )
Scene 4	<b>A Hospital Ward</b>
Scene 5	<b>A Ford Showroom</b> CORTINA! ( <i>Cortina Man &amp; Girls</i> )
Scene 6	<b>Rita and Eddie's House</b> THE LETTER ( <i>Eddie</i> )
Scene 7	<b>Outside Parliament</b>
Scene 8	<b>Barbara Castle's Office</b> IDEAL WORLD ( <i>Barbara Castle</i> )
Scene 9	<b>A Hospital Ward</b>
Scene 10	<b>A Park</b> NEARLY HAD IT ALL ( <i>Rita, Eddie, Women</i> )
Scene 11	<b>Eastbourne</b> VIVA EASTBOURNE ( <i>Ensemble</i> )
Scene 12	<b>Backstage at the TUC Conference</b>
Scene 13	<b>The Auditorium at the TUC Conference</b> STAND UP ( <i>Rita, Eddie, Ensemble</i> )



# Book a tour and experience our gyms first hand\*



\*Membership Terms & Conditions apply.



England's oldest University playhouse is administered and maintained by the University of Cambridge.

Chairman of the Executive Committee: Dr Mark Billinge

Theatre Manager: Luke Dell

Operations Manager: Olivia Wheeler

Technical Manager: Alex Bevan

Production Manager: Freya Prince

Theatre Administrator: Grace Morris

Maintenance Technician: Darren Thomas-Carr

Box Office: 01223 300085

Free online booking: [adctheatre.com](http://adctheatre.com) | [adcticketing.com](http://adcticketing.com)

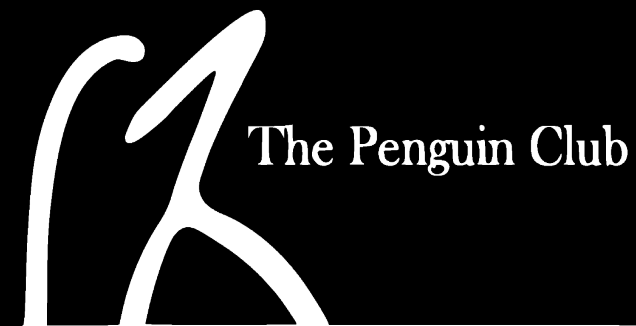
Administration Tel: 01223 359547

The ADC Theatre is a non-smoking venue.

Patrons are reminded that in accordance with Cambridgeshire County Council regulations, the consumption of drinks in glasses is not permitted in the auditorium.

Audience members must comply with the ADC's Code of Conduct, which can be found at [adctheatre.com/conduct](http://adctheatre.com/conduct)

Tonight's performance will include a 15-minute interval



Next time you come to a show would  
you like to be behind the scenes?

The Penguin Club provides backstage help from set construction to stage management for shows in the Cambridge area, and is always on the look out for new volunteers - previous experience is not required! If you're interested in knowing more, get in touch with us at:

[clubcontact@penguinclub.org.uk](mailto:clubcontact@penguinclub.org.uk)

Find out more at: [penguinclub.org.uk](http://penguinclub.org.uk)

Facebook: Penguin Club

Twitter: @TheatrePenguins



# The Fight for Women's Rights

## A 20<sup>th</sup> Century Timeline



<b>1908</b>	Aldeburgh becomes the first town in the UK to have a female mayor.
<b>1913</b>	Emily Dawson becomes the first woman magistrate.
<b>1914</b>	The UK gets its first policewomen.
<b>1917</b>	The Women's Royal Naval Service is formed.
<b>1918</b>	Women over 30 are allowed to vote.
<b>1919</b>	The Sex Disqualification Act allows women to become lawyers, vets and civil servants. The Women's Engineering Society is formed. Britain also gets its first female MP.
<b>1922</b>	The Law of Property Act allows both husband and wife to inherit property equally.
<b>1923</b>	The Matrimonial Causes Act makes grounds for divorce the same for women and men.
<b>1928</b>	All women over 21 are allowed to vote - the same as for men.
<b>1929</b>	Margaret Bondfield becomes the first woman cabinet minister. Women become 'persons' in their own right, by order of the Privy Council.
<b>1946</b>	Lilian Lindsay becomes the first woman president of the British Dental Association.
<b>1956</b>	Rose Heilbron becomes the first woman judge.
<b>1964</b>	The Married Women's Property Act entitles a woman to keep half of any savings she has made from the allowance she is given by her husband.
<b>1968</b>	Women at the Ford car factory in Dagenham strike over equal pay, almost stopping production at all Ford UK plants.
<b>1970</b>	The Equal Pay Act is passed.
<b>1972</b>	Rose Heilbron becomes the first woman judge at The Old Bailey.
<b>1975</b>	The Sex Discrimination Act makes it illegal to discriminate against women in employment, education and training.
<b>1979</b>	Margaret Thatcher becomes the first woman Prime Minister.

**Director**

**Musical Director**

**Choreographer**

**Technical Director**

**DSM**

**Stage Manager**

**Assistant Stage Manager**

**Sound Designer**

**Lighting Designer**

**Set Designer**

**Props**

**Costumes**

**Assisted by**

**Hair / Make-up**

**Crew**

**Front of House/ Lead Chaperone**

**Chaperones**

**Megan Stickler-Sell**

**Andrew Taylor**

**Emily Ruth Garner**

**Andrew Featherstone**

**Ian Bruno**

**Cat Nicol**

**KM White**

**Charlie Jonas**

**Sam Porter-Frakes**

**Sarah Deboys**

**Ali Hall**

**Carol Bye**

**Jo Grantham, Pippa Taylor,**

**Jan Brown, Anna Brown,**

**Suze Oldfield,**

**Jane Presland**

**Emma Colquhoun**

**Susan Barnes**

**The Penguin Club**

**Madeline Harmer**

**Amy Rainton**

**Claire Nugent**

# Our Cast

## Dagenham Girls

Rita O'Grady	Vikki Jones
Beryl	Samantha O'Hare
Connie Riley	Joanne Dodds
Sandra Beaumont	Cathy Bains
Clare	Becky Bloom
Cass	Laura Saunders

## Dagenham Boys

Eddie O'Grady	Ben Clark
Monty	Paul Malpas
Sid	Edward Chancellor
Bill	Jamie Roach
Stan	Trey Augustus
Barry	Oliver Oxley

## The Management

Hopkins	Chip Colquhoun
Ron Macer	Ted Ridgway Watt
Gregory Hubble	Lake Falconer
Tooley	Adam Mansfield

## The Politicians

Harold Wilson	Warren Clark
Barbara Castle	Philippa Clark

## Dagenham Children

Sharon O'Grady	Connie Jones
	Isla Smith
Graham O'Grady	Charlie Blackmore
	Rupert Fisher

# made in Dagenham

THE MUSICAL

## Our Orchestra

Andrew Taylor	Keyboard 1/Conductor
Emma Andrews	Keyboard 2
Maria Carnarius	Keyboard 3
Simon Andrews	Flute, Alto Flute, Alto Sax, Tenor Sax
Sally Gogna	Clarinet, Soprano Sax, Tenor Sax, Baritone Sax
Paul Garner	Trumpet, Flugelhorn, Cornet
Conrad Thinagaran	Guitar
Stephen Denman	Bass
Tom Hancock	Drums
Viv Scott	Percussion

## Other Parts

Lisa Hopkins	Emma Harpley
Chubby Chuff	Paul Malpas
Mr Buckton	Lake Falconer
Cortina Man	Luke Thomas
Club Singer	Luke Jones

## Cortina Girls

Alicia Hussey
Abigail Mann
Chloe Hall
Shanta Sabnis-Thomas
Shanti Jones

## "The Letter" Dancers

Chloe Hall
Trey Augustus

## Featured Performers

Amelia Bass
Kirsty Smith
Lisa Smith
Lucy Kivlin
Marco Palma
Matias Ricci
Sarah Black



# OUR CAST



Vikki Jones



Ben Clark



Philippa Clark



Rupert Fisher



Charlie Blackmore



Isla Smith



Connie Jones



Samantha O'Hare



Joanne Dodds



Cathy Bains



Becky Bloom



Laura Saunders



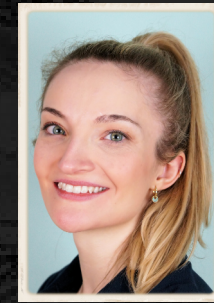
Emma Harpley



Luke Thomas



Luke Jones



Alicia Hussey



Abigail Mann



Paul Malpas



Edward Chancellor



Jamie Roach



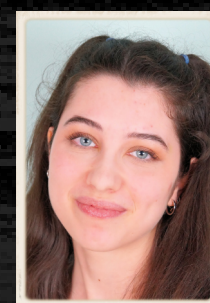
Trey Augustus



Oliver Oxley



Chloe Hall



Shanta Sabnis-Thomas



Shanti Jones



Amelia Bass



Kirsty Smith



Chip Colquhoun



Ted Ridgway Watt



Lake Falconer



Adam Mansfield



Warren Clark



Lisa Smith



Lucy Kivlin



Matias Ricci



Marco Palma



Sarah Black





**Megan Sticker-Sell**  
Director



**Andrew Taylor**  
Musical Director



**Emily Ruth Garner**  
Choreographer



**The Pied Pipers**  
have an extensive range of high  
quality costumes for hire,  
including complete sets for  
**Beauty And The Beast**  
**Grease**  
**Chitty Chitty Bang Bang**  
**The Wedding Singer**  
**Honk!**  
**Oklahoma!**  
And many more!  
Check out our website, or send  
enquiries to:

**costume@piedpipers.co.uk**

## A NOTE FROM OUR DIRECTOR

It has been a pleasure to work on *Made in Dagenham*, made more enjoyable by such an incredible cast and crew, bringing both familiar and new faces to the Pied Pipers' stage. With a true story and one that is so personal to Madeline (Chair of the Pied Pipers Committee), I have really felt the pressure to stay true to the origins and the message of the show. We've been privileged with our casting choices due to the standard of talent that came forward. Unfortunately, despite our determined efforts to meet the script's casting requirement for Cass to be played by a black actor, this proved challenging, so we decided to focus on utilising the talent available and cast a brilliant performer from our auditionees. We acknowledge that women of colour have an even greater fight to be recognised, and that our interpretation doesn't fully represent this. There is still so much to fight for.

I have been fortunate to work with people who have shared and enhanced my vision for this show beyond my wildest dreams. I would like to thank everyone who has helped bring *Made in Dagenham* to life, particularly Andrew and Emily who have helped execute the script and bring the exceptional talent out from the cast. I would also like to thank my technical team without whom we would be sitting in the dark looking at a blank space. Sarah has brought my descriptions of my abstract hierarchical factory world to fruition and Carol has created the feel for the era through the costumes perfectly. Every member of the cast and crew has worked tirelessly to ensure that *Made in Dagenham* is everything I wanted and so much more. I will forever be grateful for my new Dagenham family.

Those of us who enjoy equal pay stand on the shoulders of those who came before us and we all owe them a massive debt. There's much still to fight for to make our world a fairer place for all and we hope that telling this story of some true heroes tonight is a reminder that any of us can stand up and be part of that change.

## THE COMPLETE BESPOKE PICTURE FRAMING SERVICE

01223 439001

info@hmcframing.co.uk

hmcframing.co.uk

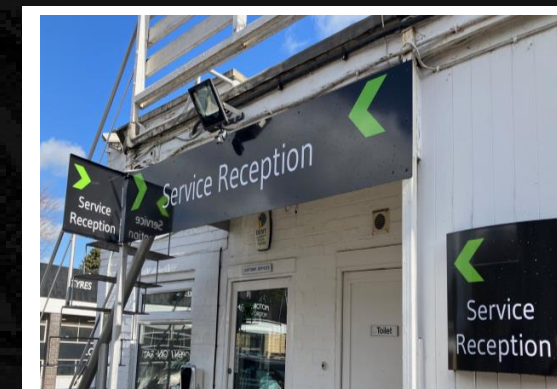


1 Winship Road  
Milton  
Cambridge  
CB246BQ



- Framing
- Mounting
- Repairs
- Cleaning
- Memorabilia
- Artwork
- Prints
- Photography



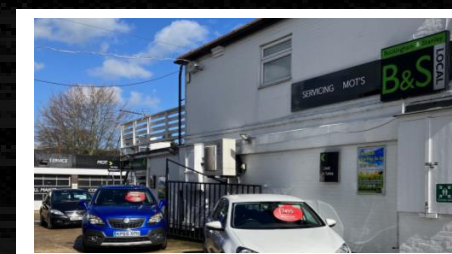


## Local, Friendly & Experienced

All makes Servicing & Repairs, MOT testing, Cars, Vans & Motorcycles

For all your motoring needs

**Tel: 01223 081525**



**Buckingham & Stanley Ltd**

12/14 High Street  
Histon

Cambridge  
CB24 9JD

[www.bslocal.co.uk](http://www.bslocal.co.uk)

### Dictionary *Local*

Adjective

1. pertaining to or characterized by place or position in space; spatial.
2. pertaining to, characteristic of, or restricted to a particular place or particular places: a local custom.
3. pertaining to a city, town, or small district rather than an entire state or country: local transportation.
4. stopping at most or all stations: a local train.

**To us, Local  
means Friendly  
and Experienced  
- since 1968**



THIS AMATEUR PRODUCTION IS PRESENTED BY ARRANGEMENT WITH MUSIC THEATRE INTERNATIONAL  
ALL AUTHORISED PERFORMANCE MATERIALS ARE ALSO SUPPLIED BY MTI

FESTIVAL PLAYERS PROUDLY PRESENTS...

# THE PRODUCERS

MUSIC AND  
LYRICS BY  
MEL BROOKS

BOOK BY  
MEL BROOKS AND  
THOMAS MEEHAN

ORIGINAL DIRECTION  
AND CHOREOGRAPHY  
BY SUSAN STROMAN  
BY SPECIAL ARRANGEMENT  
WITH STUDIOCANAL

A NEW MEL  
BROOKS MUSICAL

**adc**  
THEATRE

THU 30 MAY - SAT 08 JUNE 2024  
7.45PM SAT 01 & SAT 08 JUNE at 2.30PM  
TICKETS: £15.50-£19.00 (THU 30 MAY: £13.50-£17.00)  
BOX OFFICE: 01223 300085 | ADCTHEATRE.COM  
PARK STREET | CAMBRIDGE | CB5 8AS



## TURTLE DOVE CAMBRIDGE



Turtle Dove Cambridge is an events company with a difference!  
We are a Community Interest Company which exists to provide supported work experience for young women aged 14-24 who are or are at risk of not being in education, employment or training.

We support young women who lack the confidence to gain training and employment due to negative life experiences.

The young women we work with gain invaluable transferable soft skills such as customer service, organisation, professionalism, teamwork and problem solving.

### EVENTS

Our team offer a friendly, resourceful, and helpful service, allowing you to sit back and enjoy your event.

As well as staffing the events, Turtle Dove can also help you source a local caterer and have our own vintage china available to hire for the day.

When it comes to supporting your event, we have a selection of options that enable us to ease the stress of your day. From handling the catering and table service, to stewarding guests and tidying up after, we can tailor our services to suit your wants and needs.

### AFTERNOON TEAS

Our team specialise in afternoon teas. With our vintage china and focus on old fashioned customer service values, our afternoon teas are beautiful experiences for any celebration. We have a selection of packages to suit different event requirements. We partner with a range of local suppliers from Cordon Bleu pastry chefs to socially conscious caterers to package and deliver the perfect afternoon tea for you and your guests.

GET IN CONTACT FOR BOOKING  
ENQUIRIES AND TO FIND OUT MORE  
ABOUT OUR WORK:  
[HELLO@TURTLEDOVECAMBRIDGE.COM](mailto:HELLO@TURTLEDOVECAMBRIDGE.COM)



TURTLE DOVE  
CAMBRIDGE





The Pipers Musical Theatre Club always welcomes new members.

If you are interested in becoming involved, whether performing on-stage or helping behind the scenes, then please e-mail us with your contact details at:

[secretary@piedpipers.co.uk](mailto:secretary@piedpipers.co.uk)

**Our Next Production, Spring 2025**



**BOOK** By Roger O. Hirson  
**MUSIC** by Stephen Schwartz  
**LYRICS** by Stephen Schwartz

**ADC Theatre, April 29<sup>th</sup> - May 3<sup>rd</sup>, 2025**

This amateur production is presented by arrangement with Music Theatre International.  
All authorised performance materials are also supplied by MTI. [www.mtishows.co.uk](http://www.mtishows.co.uk)