



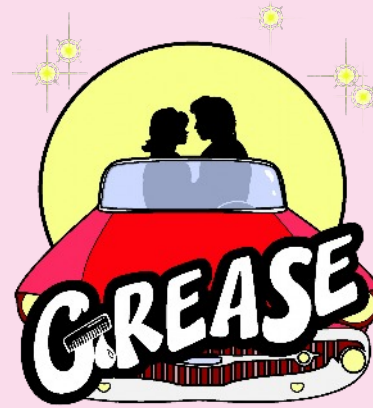
**BOOK, MUSIC, AND LYRICS BY JIM JACOBS AND WARREN CASEY**

**THE SONGS "HOPELESSLY DEVOTED TO YOU", "YOU'RE THE ONE THAT I WANT", AND "SANDY"  
ARE USED BY ARRANGEMENT WITH ROBERT STIGWOOD.**

**adc**  
THEATRE

**"GREASE" IS PRESENTED THROUGH SPECIAL ARRANGEMENT WITH AND ALL AUTHORISED  
PERFORMANCE MATERIALS ARE SUPPLIED BY THEATRICAL RIGHTS WORLDWIDE (TRW),  
122-124 REGENT STREET, 5TH FLOOR, LONDON W1B 5SA. [WWW.THEATRICALRIGHTS.CO.UK](http://WWW.THEATRICALRIGHTS.CO.UK)**

*noda*  
Be inspired by amateur theatre



## ***WELCOME DEAR AUDIENCE!***

Well, following two postponements due to COVID, our production of this wonderful show has finally reached the stage! This happening is a testament to our amazing creative team and cast, who have had to overcome numerous challenges along the way. Their commitment, determination and creativity has been awesome, and I thank each and every one of them, and our fantastic stage crew who are making it all happen today.

Pied Pipers are thrilled to have such a young and dynamic cast and we really hope that you, the audience and most important element, enjoy every moment!

*Madeline Harmer*

Chair of Pied Pipers

# ***SCENES AND SONGS***

## ***ACT I***

**Reunion**

***Rydell Alma Mater:*** Company

***Rydell Alma Mater - Parody:*** Greasers, Pink Ladies

**Cafeteria And School Steps**

***Summer Nights:*** Danny, Sandy and Ensemble

**School**

***Those Magic Changes:*** Doody and Ensemble

**Pajama Party**

***Freddy My Love:*** Marty and Pink Ladies

**Street Corner**

***Greased Lightning*** - Kenickie and Greasers

**Schoolyard**

***Rydell Fight Song:*** Patty, Sandy and Cheerleaders

**Park**

***Mooning:*** Roger and Jan

***Look At Me I'm Sandra Dee:*** Rizzo

***We Go Together:*** Company

## ***ACT II***

**School Gym**

***Shakin' At The High School Hop:*** Company

***Born To Hand Jive:*** Johnny Casino and Company

***Hopelessly Devoted to You:*** Sandy and Ensemble

**Outside The Burger Palace**

***Beauty School Dropout:*** Teen Angel and Girls

**Drive-In Movie**

***Sandy:*** Danny

**Jan's Party**

***Rock 'n' Roll Party Queen:*** Doody and Roger

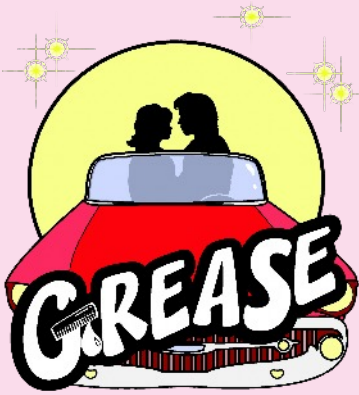
***There Are Worse Things I Could Do:*** Rizzo

***Sandra Dee – Reprise:*** Sandy

**Inside The Burger Palace**

***You're The One That I Want:*** Sandy, Danny, Company

***Finale:*** Full Company

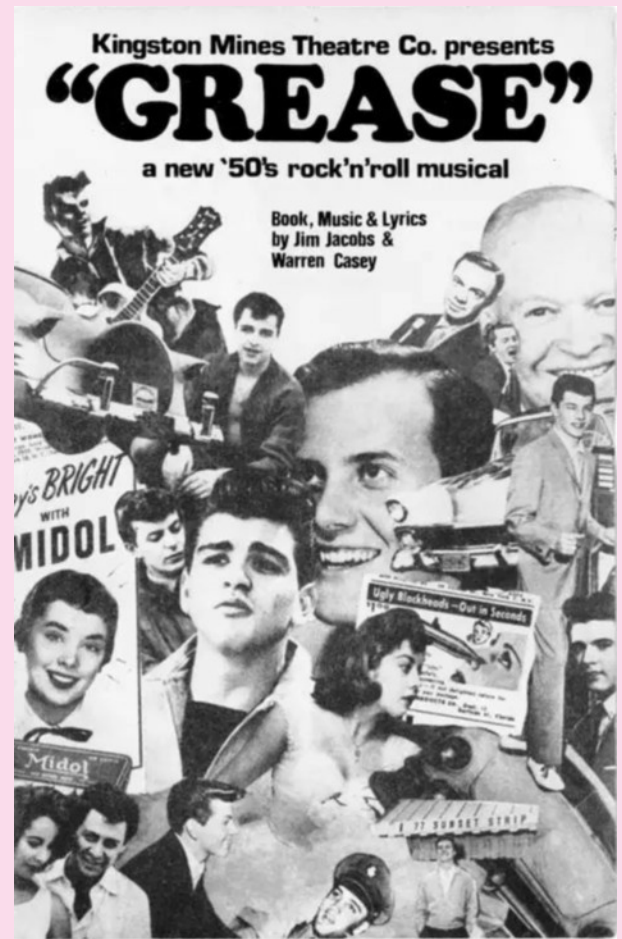


## **FROM STAGE TO SCREEN**

In its original form, the 1971 production in Chicago, *Grease* was raunchy, raw, aggressive and, according to some reviewers at the time, vulgar. During its evolution to the longest ever running Broadway musical (at the time it closed - it was a record beaten soon afterwards by *A Chorus Line*) it was largely sanitized and “toned down” to appeal to a more mass audience.

Named after the 1950s United States working-class youth subculture known as *greasers*, the musical is set in 1959 at Rydell High School, which was largely based on William Howard Taft School in Chicago. It follows ten working-class teenagers as they navigate the complexities of peer pressure, politics, personal core values, and love.

The show explores various social issues such as teenage pregnancy, peer pressure and gang violence; its themes include love, friendship, teenage rebellion, sexual exploration during



*The original Chicago production poster*

adolescence, and, to some extent, class consciousness and conflict.

Its writer, Jim Jacobs, described the show's basic plot as a subversion of the common themes of 1950s cinema, since the female lead, who in many 1950s films transformed the alpha male into a more sensitive and sympathetic character, is instead drawn into the man's influence and is transformed herself.

The Robert Stigwood Organization adapted *Grease* into the well known 1978 movie directed by Randal Kleiser and choreographed by Patricia Birch. In addition to Birch, three performers from the Broadway version carried over to the cast: Jamie Donnelly reprised her role as Jan, John Travolta performed as lead Danny Zuko while Jeff Conaway played Kenickie.

Olivia Newton-John was cast as Sandy; Newton-John was at the time an Australian country-pop singer and so, to accommodate the casting change, the character's nationality was rewritten, and parts of the score were replaced.

For the movie, the script was substantially rewritten, removing the character of Roger completely, and introducing characters which were unseen in the stage version. Some songs were removed, whilst new ones were added.

The movie also saw a further "toning down" of the edginess of the original Chicago show.



*1950's Greasers*



*The original production of Grease at The Kingston Mines Club in Chicago*

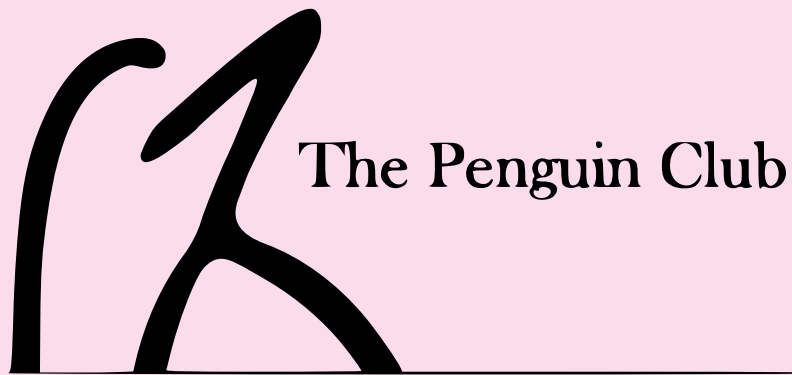
Some of the differences between original stage musical and the movie:

In the musical, the boy's gang are called The Burger Palace Boys; their rival gang are called the Flaming Dukes and are never seen. In the movie they are called The T-Birds - their rival gang are The Scorpions and are seen a lot.

In the musical, Sandy is an all-American girl with Polish roots - her last name is Dumbrowski. In the movie she became Sandy Olsson, from Australia.

In the Musical, the song "Look at Me, I'm Sandra Dee" had a reference to Sal Mineo, who was murdered in 1976. For the movie, the lyric was changed to reference Elvis Presley, who actually died the same day the scene was filmed.

Throughout the original musical, the dialogue contained occasional strong language, which was largely removed from the script by the time the movie was re-written.



Next time you come to a show would you like to be behind the scenes? The Penguin Club provides backstage help from set construction to stage management for shows in the Cambridge area, and is always on the look out for new volunteers - previous experience is not required! If you're interested in knowing more, get in touch with us at: [clubcontact@penguinclub.org.uk](mailto:clubcontact@penguinclub.org.uk)

Find out more at: [penguinclub.org.uk](http://penguinclub.org.uk),  
Facebook: Penguin Club    Twitter: @TheatrePenguins

## ADC Theatre

England's oldest University playhouse is administered and maintained by the University of Cambridge.

Chairman of the Executive Committee: Dr Mark Billinge

Theatre Manager: Jamie Rycroft

Operations Manager: Luke Dell

Production Manager: Lucia Revel-Chion

Technical Manager: Eduardo Strike

Office Administrator: Anna Perry

Box Office Administrator: Will Pears-Cooper

Box Office: 01223 300085

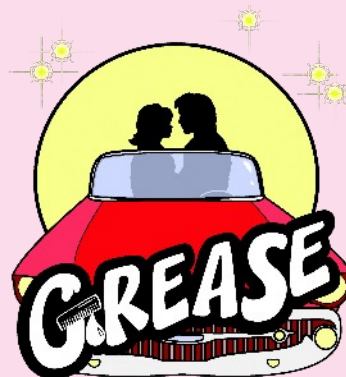
Free online booking: [adctheatre.com](http://adctheatre.com) | [adcticketing.com](http://adcticketing.com)

Administration Tel: 01223 359547

The ADC Theatre is a non-smoking venue.

Patrons are reminded that in accordance with Cambridgeshire County Council regulations, the consumption of drinks in glasses is not permitted in the auditorium.

Tonight's performance will include a 15 minute interval



## PRODUCTION TEAM

**Director**

Megan Stickler-Sell

**Musical Director**

Andrew Taylor

**Choreographer**

Emma Olley

**Technical Co-ordinator:** Jamie Balcombe

**DSM:** Cat Nicol

**Production Assistant:** Sarah Deboys

**Lighting Designer:** James Wright

**Sound Designer:** Serena Povia,  
Assisted by Paul Gotch

**Properties:** Ali Hall

**Set Design:** Andrew Featherstone

**Master Carpenters:** Leah Ward  
George Bateman

**Scenic Artist:** Jenny Ervine with  
members of the Penguin  
Club

**Crew:** The Penguin Club

**Floor Manager:** Rachel Chapman

**Publicity Manager:** Lucy Farrow

**Front of House:** Madeline Harmer

**Poster / Programme:** David Bone

**Costume Designer:** Carol Bye

**Assisted by:** Jan Brown

Anna Brown

Pippa Taylor

Jo Grantham

Abigail Mann

**Make-up and Hair:** Emma Sutcliffe

Shannia Hodge-Beckwith

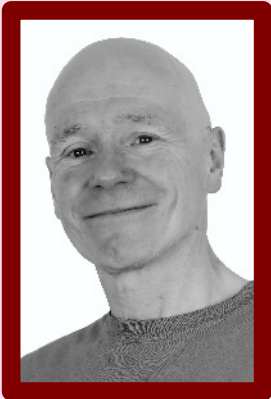
# **RYDELL HIGH - CLASS OF '59 - THE TEACHERS**



**MEGAN STICKLER-SELL**  
**DIRECTOR**

I am thrilled to have been given the opportunity by Pied Pipers to bring *Grease* to the Cambridge stage (finally!) *Grease* is such an iconic show; I remember a school dance being themed around it; I watched my sister get excited as Mum made a *Grease* skirt for her to wear for the evening and swore that one day, that would be me. I was eight at the time and while it's several years later, now is my chance to have a ball with my very own *Grease* dance.

I'm clearly patient as far as *Grease* is concerned, with an 18 month wait to bring it to the stage in a way that does the show and our incredible cast justice. They have battled through delays, isolations and Zoom rehearsals to get to the finished product and I honestly couldn't be prouder. I hope you enjoy the show as much as we have done putting it together and bop out of here with the songs going round in your head as 'We Go Together' once more.



**ANDREW TAYLOR**  
**MUSICAL DIRECTOR**

*Grease* is probably best known for the songs "You're the One That I Want" (which was not in the original stage show, but was written for the film version) and "Summer Nights", both of which became chart-topping hits in the 1970s. Also written for the film, and included in our production, are Sandy's torch song "Hopelessly Devoted" and Danny's "Sandy". Some of the other songs are perhaps less familiar, but they are nicely shared out, giving several of our talented cast a chance to shine. We're delighted to bring the show to the stage after its long delay, and we hope you enjoy it as much as we've enjoyed putting it together.



**EMMA OLLEY**  
**CHOREOGRAPHER**

I first experienced *Grease* as a child and I loved it for its vibrancy and upbeat music. As an adult, I still appreciate those qualities but over the past few months (and several months back in 2020!) I have also come to enjoy the light-hearted conversations, fabulous costumes, and of course the opportunity to explore the lively dance-moves of the 50s.

After a challenging start due to Covid-19 it is such a delight to finally be bringing *Grease* to the stage. The cast have worked tirelessly to rehearse every step of every dance, battling through online rehearsals and social distancing, and I could not be more proud of them. It will be a joy to watch them bring the show to life under the stage lights and in front of a live audience.



# THE STUDENTS



**ELLE BROWN**  
**SANDY**



**CHIP COLQUHOUN**  
**DANNY**



**ABIGAIL MANN**  
**RIZZO**



**MARK HAMPTON**  
**KENICKIE**



**ALEX STOKOE**  
**KENICKIE UNDERSTUDY**



**BRYONY HELEN SULLIVAN**  
**MARTY**



**GEORGIA DERBYSHIRE**  
**JAN**



**ZACK SZRETER**  
**DOODY**



**ALICIA HUSSEY**  
**FRENCHY**



**JON ARMSTRONG**  
**SONNY**



**MAXIM THOMPSON**  
**ROGER**



**AMY BROWN**  
**PATTI**



**ALEX KUBIESA**  
**EUGENE**



**JANE PRESLAND**  
**MISS LYNCH**



**WILL TAYLOR**  
**TEEN ANGEL**



**HEIDI WILSON**  
**CHA CHA**



**RICHARD BETTS**  
**VINCE FONTAINE**



**STEPHEN WAINRIB**  
**JOHNNY CASINO**



**DEEDEE DOKE**  
**COACH**



**CHARLOTTE GREENO**  
**ENSEMBLE**



**LIZZY KAYE**  
**ENSEMBLE**



**GEORGE MILLER**  
**ENSEMBLE**



**LAURA ROBERTS**  
**ENSEMBLE**



**RHEANON HANKS**  
**ENSEMBLE**



**SHANTA SABNIS THOMAS**  
**ENSEMBLE**

## **OUR ORCHESTRA:**

### **Guitars:**

Owen Chambers  
Jordan Ward

### **Tenor Saxophones:**

Simon Andrews  
Anne Bury

### **Bass Guitar:**

Alan Grayer

### **Drums:**

Tom Hancock

### **Piano/Conductor:**

Andrew Taylor





The Pied Pipers Musical Theatre Club always  
welcomes new members.

If you are interested in becoming involved,  
whether performing on-stage or helping behind  
the scenes, then please e-mail us with your  
contact details at:

[secretary@piedpipers.co.uk](mailto:secretary@piedpipers.co.uk)